

NOTES:

1. PRESS FIT LEGS 0.120" LONG-  
 0.062 [1.57] MINIMUM PCB THICKNESS FOR SINGLE SIDED USE.  
 0.118 [3.00] MINIMUM PCB THICKNESS FOR BELLY TO BELLY USE.

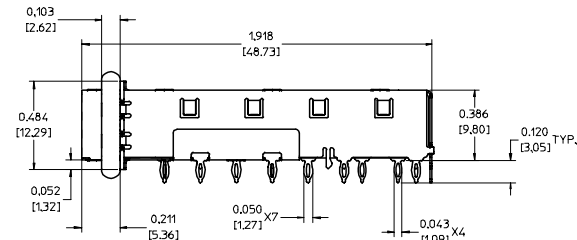
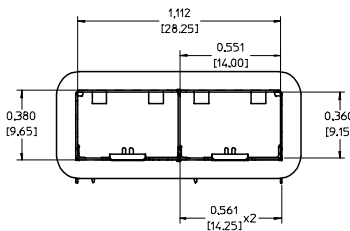
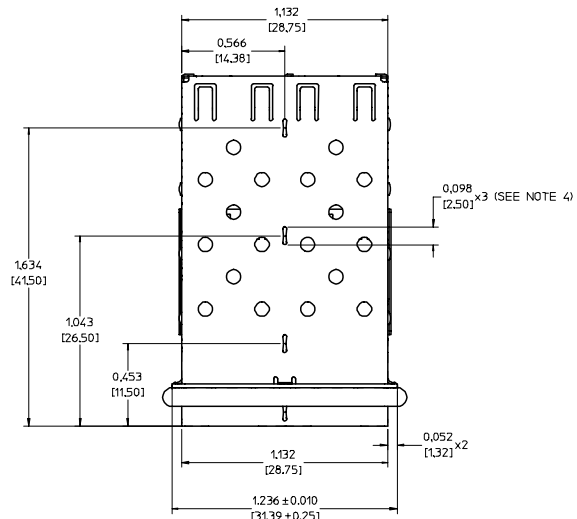
2. MATERIAL: COPPER ALLOY  
 PLATING: NONE

NOTE: A NICKEL PLATED VERSION OF THIS ASSEMBLY IS AVAILABLE.  
 REFER TO DOCUMENT SD-74722-004

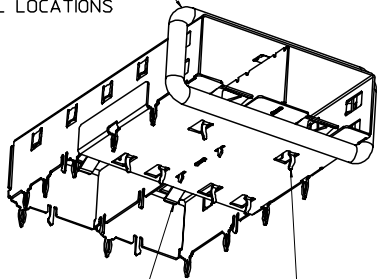
3. REFERENCE DOCUMENTS:  
 PRODUCT SPECIFICATION: PS-74728-000  
 COSMETIC SPECIFICATIONS: WI-HP-2774 AND WI-HPA-7-0093  
 TEST SUMMARY: TS-74722-0001.

4. MATES WITH SERIES 74727. LIGHT PIPE COVER ASSEMBLY.

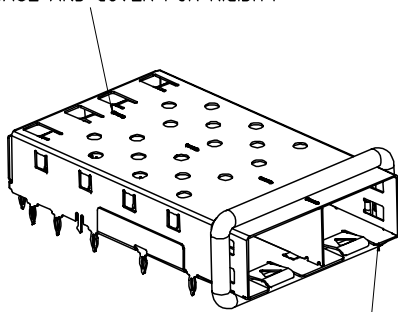
5. THIS PART MEETS THE RESTRICTION OF HAZARDOUS SUBSTANCES IN  
 ELECTRICAL AND ELECTRONIC EQUIPMENT (ROHS) DIRECTIVE (2002/95/EC).



360° ELASTOMER EMI GASKET  
 COMPLIES WITH (SFP) MSA  
 BOARD AND BEZEL LOCATIONS



INNER WALL TABS ARE COINED  
 OVER BASE AND COVER FOR RIGIDITY



EMI FINGERS  
 CONTACT ADAPTER

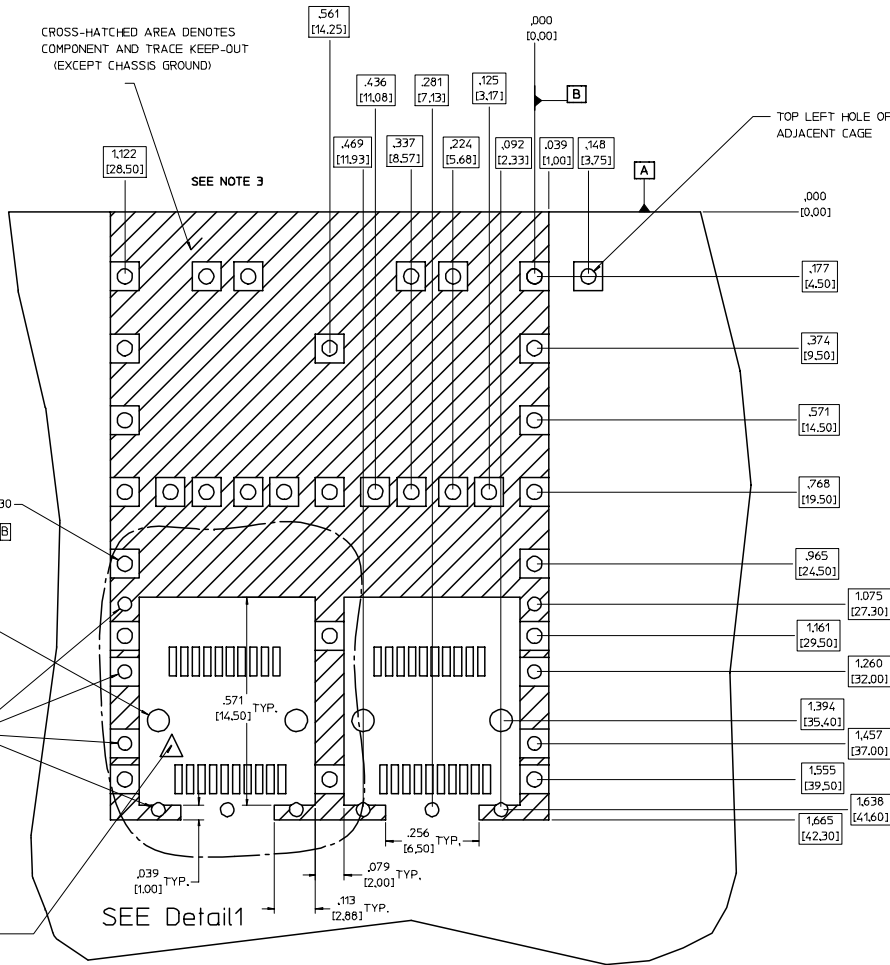
6 UNDER BELLY EMI PINS

DIMENSIONS OF EACH INNER CAGE DESIGNED  
 TO FUNCTION WITH SMALL FORM-FACTOR  
 PLUGGABLE (SFP) TRANSCEIVER

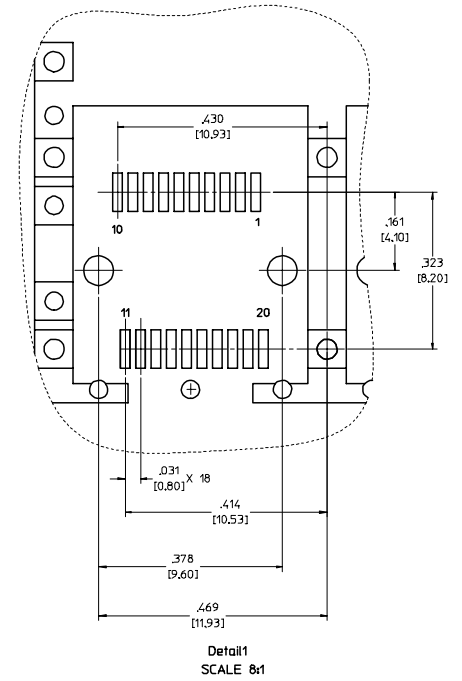
ENTER DESCRIPTION EC NO: UST2006-0073 DRAWN BY: DRWANKS/IMONSON 2006/01/17 CHECKED BY: CHFK/BRUSSELL 2006/01/26 APPR: BRUSSELL 2006/01/25	QUALITY SYMBOLS	GENERAL TOLERANCES (UNLESS SPECIFIED)	DIMENSION STYLE	SCALE	DESIGN UNITS	THIRD ANGLE PROJECTION
	▽=0 ▽=0	mm INCH 4 PLACES ± --- ± --- 3 PLACES ± --- ± .005 2 PLACES ± 0.13 ± .010 1 PLACE ± 0.25 ± --- ANGULAR ± 1 °	IN/MM DRAWN BY: DATE KS IMONSON 2003/09/25 CHECKED BY: DATE BRUSSELL 2003/10/27 APPROVED BY: DATE BRUSSELL 2003/10/27	3:1	METRIC	TITLE 1X2 SFP GANGED CAGE ASSEMBLY, PRESS FIT
			MATERIAL NO: 747220001			MOLEX INCORPORATED DOCUMENT NO: SD-74722-001
			DRAFT WHERE APPLICABLE MUST REMAIN WITHIN DIMENSIONS	SIZE D		

# PCB LAYOUT FOR BELLY TO BELLY MOUNTING

CROSS-HATCHED AREA DENOTES  
COMPONENT AND TRACE KEEP-OUT  
(EXCEPT CHASSIS GROUND)



## HOST CONNECTOR DETAIL



SEE NOTE 3

SEE Detail1

THIS AREA DENOTES  
COMPONENT KEEP-OUT  
(TRACES ALLOWED)

SMALLER HOLE ON  
THESE FOUR ROWS ONLY

### NOTES:

- PADS AND VIAS GO TO CHASSIS GROUND, (34 PLACES).  
RECOMMENDED PADS TO BE 2mm SQUARE.
- PLATING OPTIONAL FOR THROUGH HOLES (8 PLACES)
- RECOMMENDED PLATING INCLUDES HASL, IMMERSION (GOLD, SILVER, OR TIN), AND OSP.
- HOLE PATTERN REPEATS FOR EACH PORT.  
SPACING BETWEEN PORTS IS 0.561 [14.25]
- CONNECTOR PAD LAYOUT PER SFP MSA. WILL ACCOMMODATE MOLEX  
CONNECTOR SERIES 74441 OR EQUIVALENT.

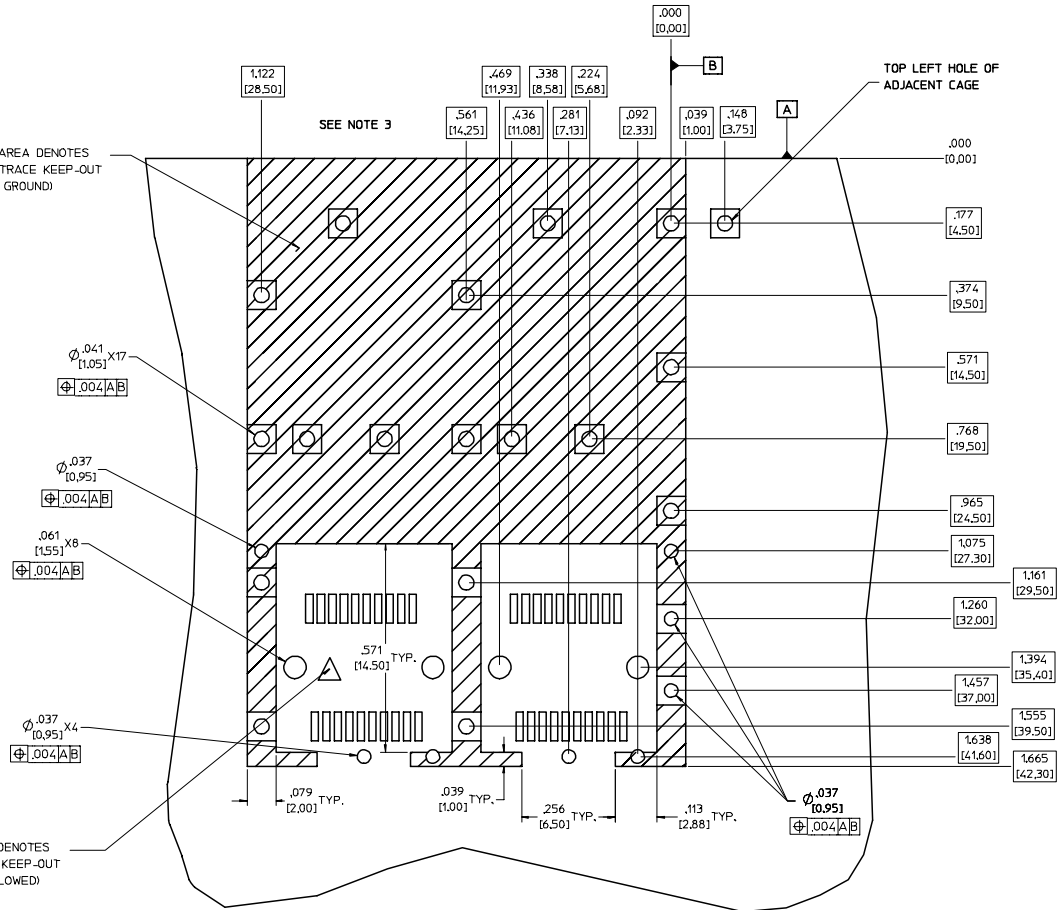
<b>ENTER DESCRIPTION</b> EC NO: UST2006-0073 DRINKS MONSON 2006/01/17 CHK: BRUSSELL 2006/01/28 APPR: BRUSSELL 2006/01/25 DESCRIPTION	QUALITY SYMBOLS	GENERAL TOLERANCES (UNLESS SPECIFIED)	DIMENSION STYLE	SCALE	DESIGN UNITS	THIRD ANGLE PROJECTION
	▽=0 ▽=0	mm INCH 4 PLACES ± --- ± --- 3 PLACES ± --- ± .005 2 PLACES ± 0.13 ± .010 1 PLACE ± 0.25 ± --- ANGULAR ± 1 °	IN/MM DRAWN BY DATE KS IMONSO 2003/09/25 CHECKED BY DATE BRUSSELL 2003/10/27 APPROVED BY DATE BRUSSELL 2003/10/27	6:1	METRIC	TITLE 1X2 SFP GANGED CAGE ASSEMBLY, PRESS FIT
	DRAFT WHERE APPLICABLE MUST REMAIN WITHIN DIMENSIONS	MATERIAL NO: 747220001	DOCUMENT NO: SD-74722-001	SHEET NO: 2 OF 5	MOLEX INCORPORATED	
	THIS DRAWING CONTAINS INFORMATION THAT IS PROPRIETARY TO MOLEX INCORPORATED AND SHOULD NOT BE USED WITHOUT WRITTEN PERMISSION					

# PCB LAYOUT FOR SINGLE SIDE MOUNTING

CROSS-HATCHED AREA DENOTES  
COMPONENT AND TRACE KEEP-OUT  
(EXCEPT CHASSIS GROUND)

SEE NOTE 3

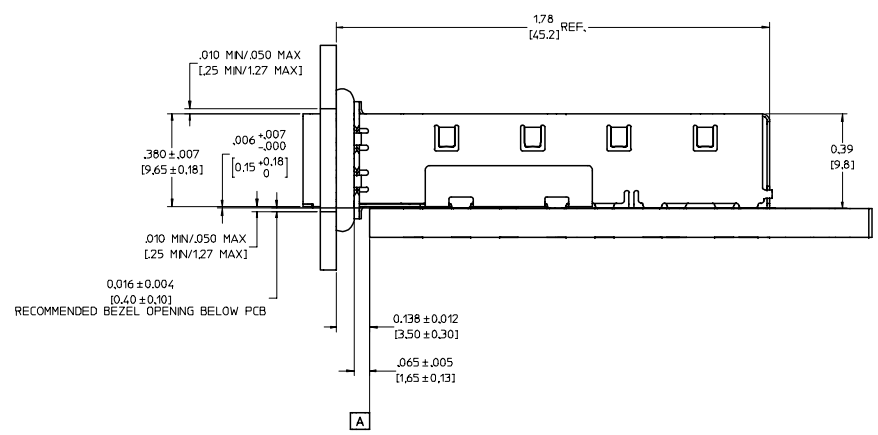
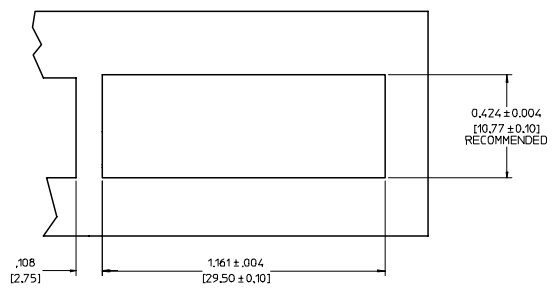
THIS AREA DENOTES  
COMPONENT KEEP-OUT  
(TRACES ALLOWED)



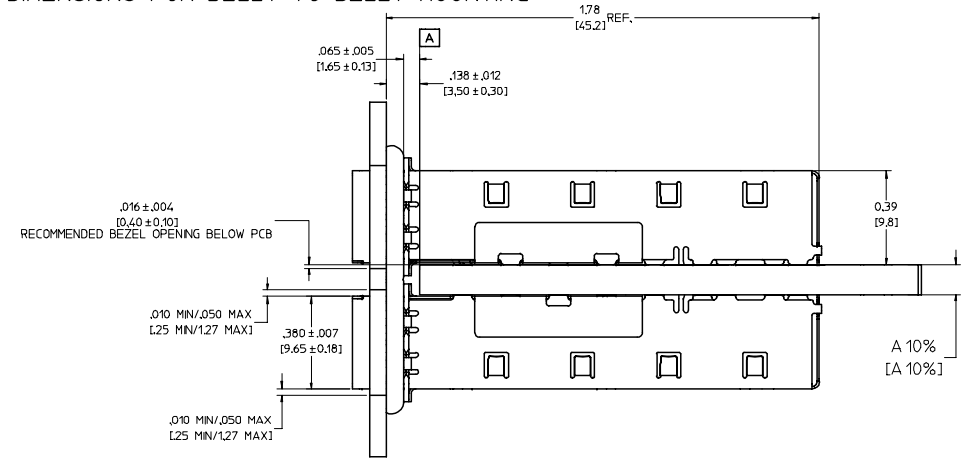
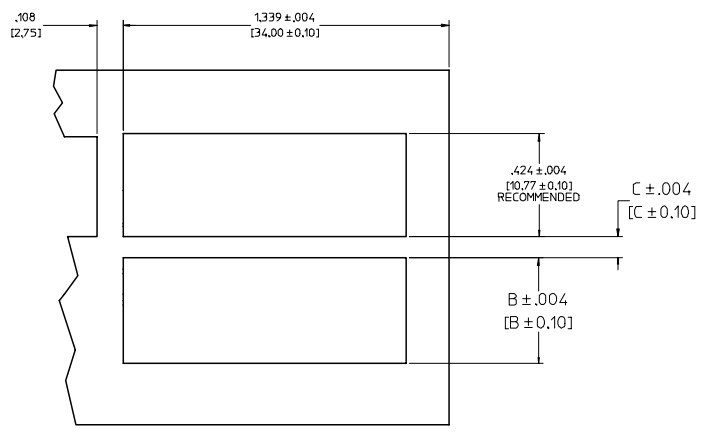
**NOTES:**

- PADS AND VIAS GO TO CHASSIS GROUND. (19 PLACES).  
RECOMMENDED PADS TO BE 2mm SQUARE.
- PLATING OPTIONAL FOR THROUGH HOLES (6 PLACES)
- RECOMMENDED PLATING INCLUDES HASL, IMMERSION (GOLD, SILVER, OR TIN), AND OSP.
- HOLE PATTERN REPEATS FOR EACH PORT.  
SPACING BETWEEN PORTS IS 0.561 [14.25]
- CONNECTOR PAD LAYOUT PER SFP MSA. WILL ACCOMMODATE MOLEX  
CONNECTOR SERIES 74441 OR EQUIVALENT.

<b>ENTER DESCRIPTION</b> EC NO: UST2006-0073 DR: DRANKS MONSON 2006/01/17 CHK: BRUSSELL 2006/01/28 APPR: BRUSSELL 2006/01/25	<b>QUALITY SYMBOLS</b> ▽=0 ▽=0	<b>GENERAL TOLERANCES (UNLESS SPECIFIED)</b>		<b>DIMENSION STYLE</b> IN/MM		SCALE 6:1	DESIGN UNITS METRIC	THIRD ANGLE PROJECTION	
		4 PLACES ± .005 ± .005	3 PLACES ± .013 ± .010	2 PLACES ± 0.25 ± .010	1 PLACE ± 0.25 ± .010	ANGULAR ± 1°	DRAWN BY KS IMONSO	DATE 2003/09/25	TITLE 1X2 SFP GANGED CAGE ASSEMBLY, PRESS FIT
		DRAFT WHERE APPLICABLE MUST REMAIN WITHIN DIMENSIONS		MATERIAL NO: 747220001		APPROVED BY BRUSSELL		DATE 2003/10/27	MOLEX INCORPORATED
		SIZE D		DOCUMENT NO. SD-74722-001		SHEET NO. 3 OF 5		THIS DRAWING CONTAINS INFORMATION THAT IS PROPRIETARY TO MOLEX INCORPORATED AND SHOULD NOT BE USED WITHOUT WRITTEN PERMISSION	



BEZEL AND BOARD POSITION DIMENSIONS FOR SINGLE SIDE MOUNTING



BEZEL AND BOARD POSITION DIMENSIONS FOR BELLY TO BELLY MOUNTING

NOTE: FOR A GIVEN BOARD THICKNESS (A), DIMENSIONS (B) AND (C) ARE DIRECTLY AFFECTED.

USE RECOMMENDED DIMENSIONS AND TOLERANCES TO AID IN DEVELOPING BEZEL OPENING.

FOR EXAMPLE USING A BOARD THICKNESS OF .125" THE RECOMMENDED VALUES WOULD BE:

A= .125/3.18 ± 10%  
 B= .434/11.03 ± .004  
 C= .088/2.23 ± .004

<b>ENTER DESCRIPTION</b> EC NO: UST2006-0073 DRINKS IMONSO 2006/01/17 CHKD: BRUSSELL 2006/01/26 APPR: BRUSSELL 2006/01/25	QUALITY SYMBOLS	GENERAL TOLERANCES (UNLESS SPECIFIED)	DIMENSION STYLE	SCALE	DESIGN UNITS	THIRD ANGLE PROJECTION
	$\nabla=0$ $\nabla=0$	mm INCH 4 PLACES ± --- ± --- 3 PLACES ± --- ± .005 2 PLACES ± 0.13 ± .010 1 PLACE ± 0.25 ± --- ANGULAR ± 1 °	IN/MM	4:1	METRIC	
	DESCRIPTION		DRAWN BY	DATE	TITLE	
			KS IMONSO	2003/09/25	1X2 SFP GANGED CAGE ASSEMBLY, PRESS FIT	
			CHECKED BY	DATE		
			BRUSSELL	2003/10/27		
			APPROVED BY	DATE		
			BRUSSELL	2003/10/27		
			MATERIAL NO.	DOCUMENT NO.		
			747220001	SD-74722-001		
			THIS DRAWING CONTAINS INFORMATION THAT IS PROPRIETARY TO MOLEX INCORPORATED AND SHOULD NOT BE USED WITHOUT WRITTEN PERMISSION			
			SIZE			SHEET NO.
			D			4 OF 5

20 19 18 17 16 15 14 13 12 11 10 9 8 7 6 5 4 3 2 1

M

L

K

J

I

H

G

F

E

D

C

B

A

M

L

K

J

I

H

G

F

E

D

C

B

A

DATE	REV	CHANGES	COMMENTS
10/27/2003	A	INITIAL RELEASE	N/A
10/06/2005	B	ADDED PCB AND BEZEL LAYOUT	N/A

<b>ENTER DESCRIPTION</b> EC NO: UST2006-0073 DRINKS MONSON 2006/01/17 CHKD: BRUSSELL 2006/01/28 APPR: BRUSSELL 2006/01/25	QUALITY SYMBOLS ▽=0 ▽=0	GENERAL TOLERANCES (UNLESS SPECIFIED)		DIMENSION STYLE IN/MM		SCALE 1:1	DESIGN UNITS METRIC	THIRD ANGLE PROJECTION	
		4 PLACES ± --- ± --- 3 PLACES ± --- ± .005 2 PLACES ± 0.13 ± .010 1 PLACE ± 0.25 ± ---	mm INCH	DRAWN BY KS IMONSO	DATE 2003/09/25	TITLE 1X2 SFP GANGED CAGE ASSEMBLY, PRESS FIT			
		ANGULAR ± 1 °		CHECKED BY BRUSSELL	DATE 2003/10/27	APPROVED BY BRUSSELL			DATE 2003/10/27
		DRAFT WHERE APPLICABLE MUST REMAIN WITHIN DIMENSIONS		MATERIAL NO. 747220001	DOCUMENT NO. SD-74722-001	MOLEX INCORPORATED			SHEET NO. 5 OF 5

19 18 17 16 15 14 13 12 11 10 9 8 7 6 5 4 3 2 1